



Marconi House, WC2R
Guide of £950,000 Leasehold



Marconi House, WC2R

With a prestigious Strand address, Marconi House is literally right on the doorstep of London's Theatreland; the Waldorf Hotel and the Novello Theatre are opposite. This apartment is on the seventh floor of this luxury modern block and it faces the pedestrianised street at the rear. It spans 732 sq ft and has two bedrooms, both Manhattan-style opening onto the living area. The master bedroom suite incorporates a dressing area and a spacious bathroom.

The block has a 24 hour concierge team and two lifts. If you seek a home in the ideal location from which to enjoy London's nightlife, then Marconi House is very definitely the right choice.

Service charge: £11,200

Ground rent: £375

24 Hour Concierge

2 Lifts

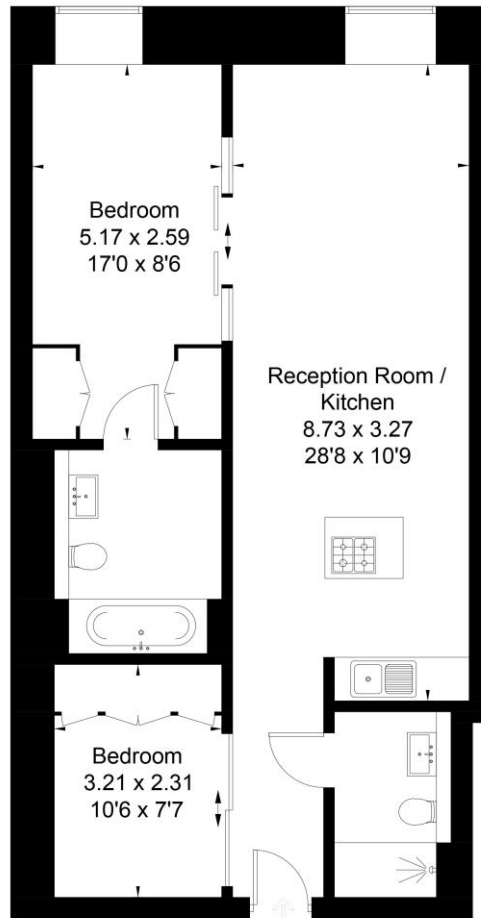
Prime Location

Modern Block

Guide of £950,000

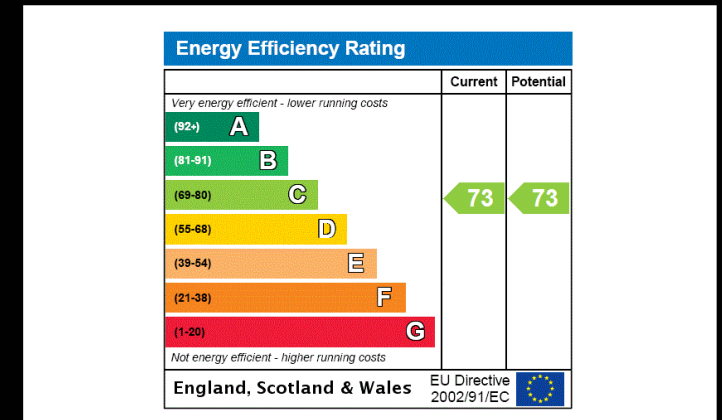


Approximate Area = 68.0 sq m / 732 sq ft
Including Limited Use Area (1.8 sq m / 19 sq ft)



Seventh Floor IN

Surveyed and drawn in accordance with the International Property Measurement Standards (IPMS 2: Residential)
fourwalls-group.com 852802



For clarification, we wish to inform prospective purchasers that we have prepared these sales particulars as a general guide. We have not carried out a detailed survey, nor tested the services, appliances and specific fittings. Room sizes are approximate and rounded: they are taken between internal wall surfaces and therefore include cupboards/shelves, etc. Accordingly, they should not be relied upon for carpets and furnishings. Formal notice is also given that all fixtures and fittings, carpeting, curtains/blinds and kitchen equipment, whether fitted or not, are deemed removable by the vendor unless specifically itemised within these particulars.